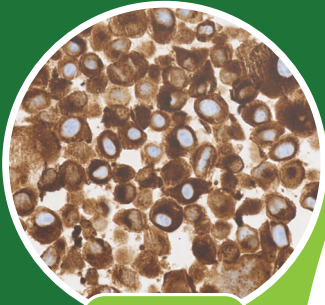
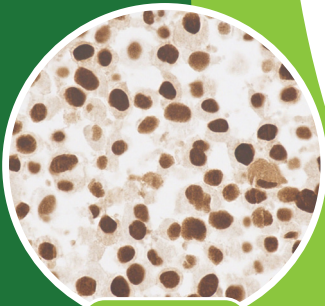


MELAN A**POSITIVE****PRAME****POSITIVE**

Specificity
across six
melanoma
markers

See reverse for HMB45, S100,
SOX10 and BRAF V600E markers

PAN MELANOMA

Analyte Control

**ONE CONTROL.
SIX MELANOMA MARKERS.
POSITIVE AND NEGATIVE VERIFICATION.**

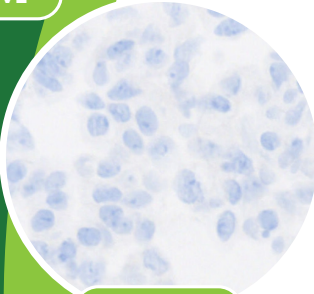
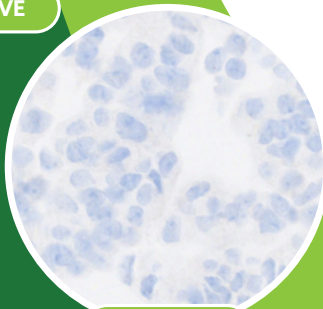
Verify S100, SOX10, HMB45, Melan A, PRAME, and BRAF V600E with defined positive and negative expression in a single control.

FFPE format standardised assay verification compatible with melanoma IHC tests.

PRODUCT NAME	FORMAT	CODE
PAN MELANOMA Analyte Control	Slide (2)	HCL062
	Slide (5)	HCL063
	Block	HCL064

Request a sample today at
info@histocyte.com

For Research Use Only, not for routine diagnostic use.

NEGATIVE**NEGATIVE**

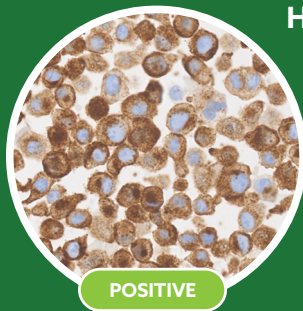
HistoCyte
Laboratories

Quality in Control

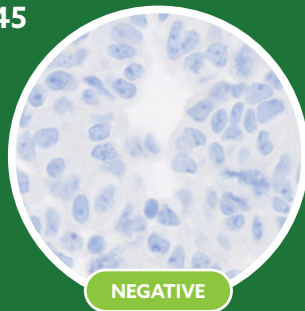
histocyte.com

PAN MELANOMA

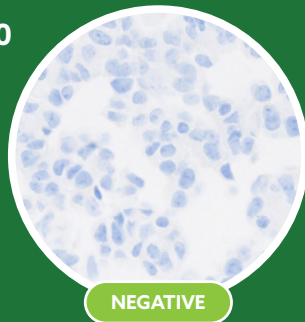
Analyte Control



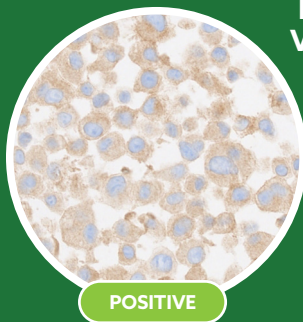
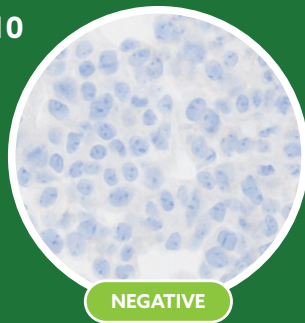
HMB45



S100



SOX10



BRAF
V600E

