

Ki67

Analyte Control^{DR}

DON'T JUST RUN Ki67 - VERIFY IT

Confirm assay sensitivity because precision medicine starts with precise assays.

FFPE format standardises assay verification; compatible with both 30-9 (Roche) and MIB1 (Agilent).

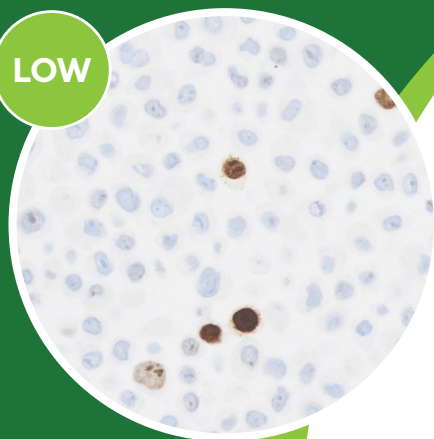
PRODUCT NAME	FORMAT	CODE
Ki67 Analyte Control ^{DR}	Slide (2)	HCL065
	Slide (5)	HCL066
	Block	HCL067

Request a sample today at

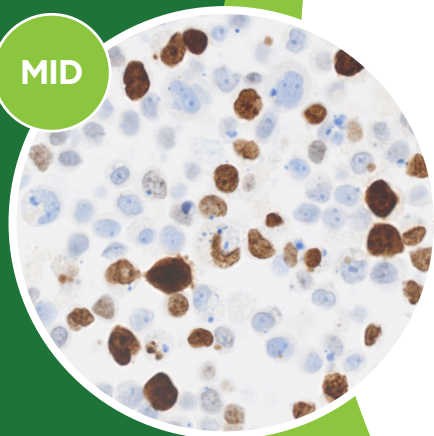
info@histocyte.com

For Research Use Only, not for routine diagnostic use.

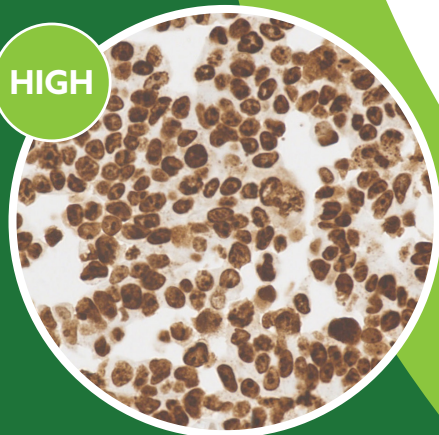
LOW



MID



HIGH



Defined low, mid and high Ki67 expression in a single control

HistoCyte
Laboratories

Quality in Control

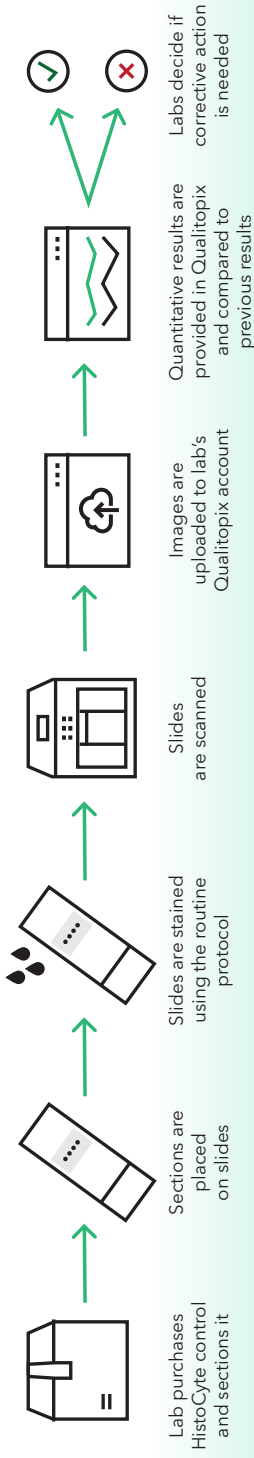
histocyte.com

How consistent is your tissue staining? And how certain are you about it?

Monitor IHC staining consistency

 QUALITOPIX®

IHC staining intensity variation caused by assay reagents or stainers is well documented - between labs and within labs. Combine HistoCyte Ki-67 control with Qualitopix for quantitative automatic evaluation. Qualitopix compares staining intensity to previous runs and alerts you in case of any deviation, enabling consistent staining intensity - powered by AI.



 VISIOPHARM®

Stay consistent



Learn more