

The logo for HistoCyte Laboratories is enclosed in a rounded rectangular box with a dark green border. The word "HistoCyte" is written in a dark green, sans-serif font, with the "H" being significantly larger and stylized. Below it, the word "Laboratories" is written in a lighter green, sans-serif font.

**HistoCyte**  
Laboratories

Quality in Control

**Breast Analyte Control**  
**Breast Analyte Control<sup>DR</sup>**

Product Codes:

Breast Analyte Control HCL013, HCL014 and HCL015

Breast Analyte Control<sup>DR</sup>: HCL016, HCL017 and HCL018

# Contents

Breast Analyte Control	2
Breast Analyte Control images: HER2	3
Breast Analyte Control images: ER	4
Breast Analyte Control images: PR	5
Breast Analyte Control <sup>DR</sup>	6
Breast Analyte Control <sup>DR</sup> images: HER2	7
Breast Analyte Control <sup>DR</sup> images: ER	8
Breast Analyte Control <sup>DR</sup> images: PR	9



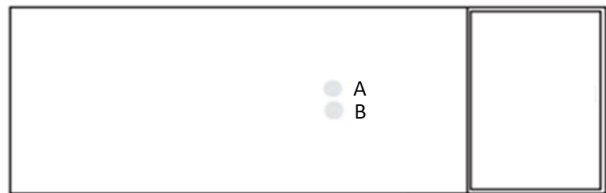
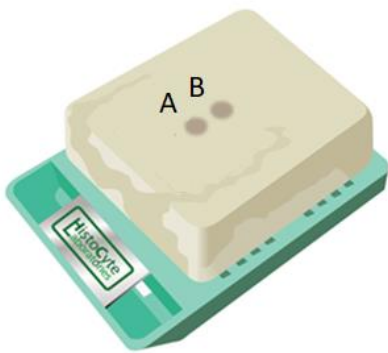
Product Name	Format	Code
Breast Analyte Control (Two cores: negative and positive for HER2, ER and PR)	Slide (2)	HCL013
	Slide (5)	HCL014
	Block	HCL015
Breast Analyte Control <sup>DR</sup> (Five cores: variable levels of expression of HER2, ER and PR. Including negative control)	Slide (2)	HCL016
	Slide (5)	HCL017
	Block	HCL018

For Research Use Only

# Breast Analyte Control

**Breast Analyte Control** is a cost effective, simple qualitative control. This product contains two cores that are positive and negative respectively HER2, Estrogen Receptor and Progesterone Receptor.

**Breast Analyte Control** is available as pre-cut slides (2 slide and 5 slide mailers) and cell microarray blocks.



Cell line	IHC HER2	IHC ER	IHC PR
A: Osteosarcoma	0	Negative	Negative
B : Breast Ductal Carcinoma	3+	Heterogeneously positive	Heterogeneously positive

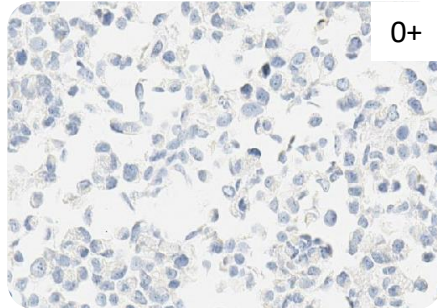
# Breast Analyte Control<sup>DR</sup> HER2

**Roche (4B5)**

**PATHWAY™ anti-HER-2/neu (4B5)**  
Rabbit Monoclonal Primary Antibody.  
Standard protocol as per IFU.

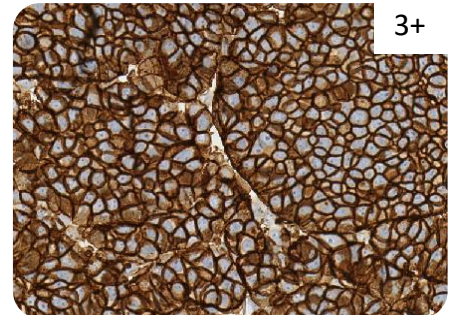
Osteosarcoma

**A**



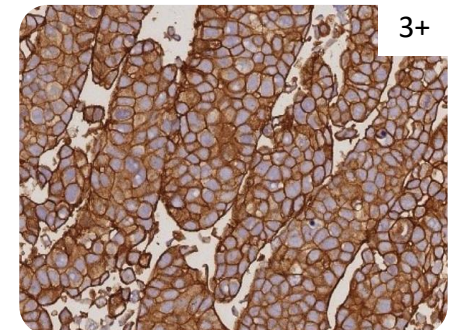
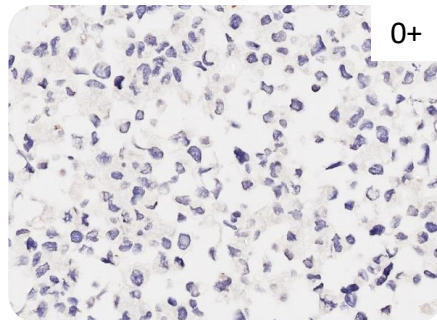
Breast Ductal Carcinoma

**B**



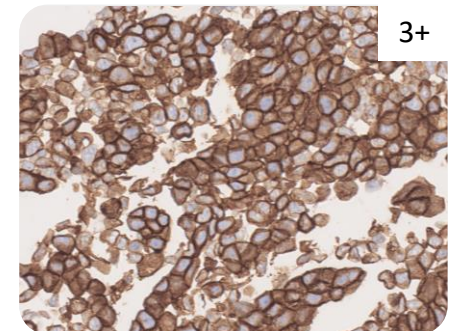
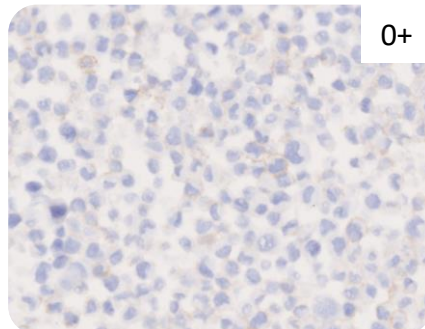
**Leica (CB11)**

**Bond Oracle HER2 IHC System (CB11).**  
Standard protocol as per IFU (Product Code:TA9145)



**Agilent (DG44)**

**HercepTest™ mAb pharmDx (clone DG44) (Dako Omnis)**. Standard protocol as per IFU  
Product Code: GE001)





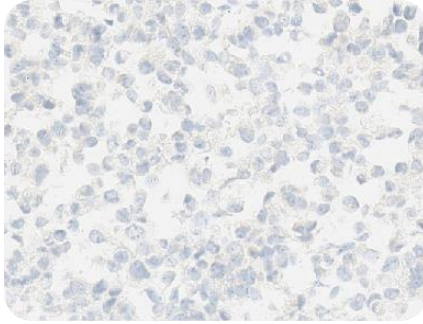
# Breast Analyte Control<sup>DR</sup> ER

**Roche (SP1)**

**CONFIRM anti-Estrogen Receptor (ER) (SP1)** Rabbit Monoclonal Primary Antibody. Standard protocol (Product Code: 790-4324)

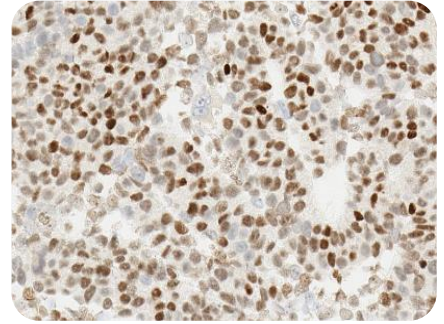
Osteosarcoma

**A**



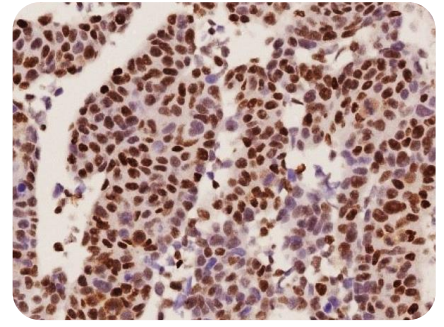
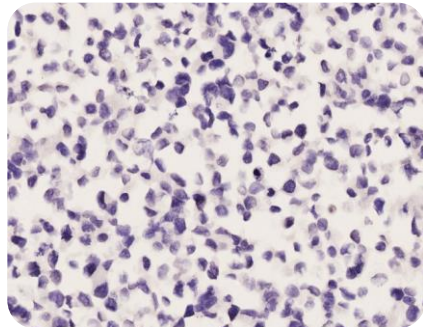
Breast Ductal Carcinoma

**B**



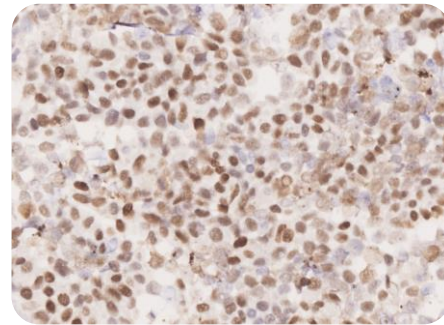
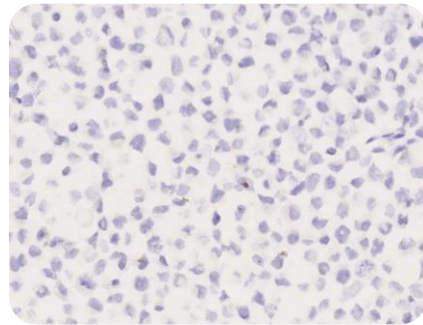
**Leica (6F11)**

**Estrogen Receptor (6F11)** Mouse Monoclonal Primary Antibody. Standard protocol. (Product Code: PA0009)



**Agilent (EP1)**

**Estrogen Receptor (EP1)** Rabbit Monoclonal Primary Antibody. Standard protocol (GA084)



# Breast Analyte Control<sup>DR</sup> PR

Osteosarcoma

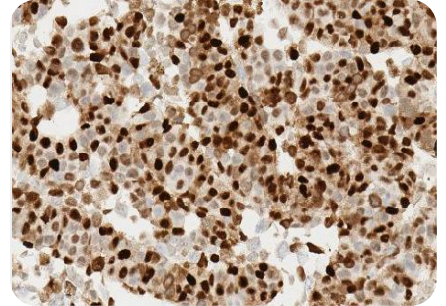
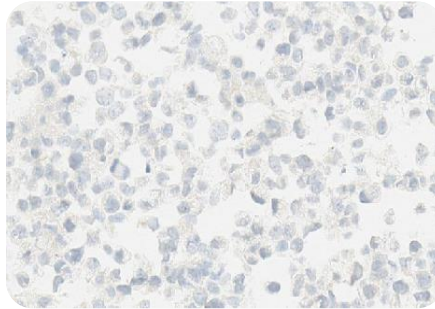
A

Breast Ductal Carcinoma

B

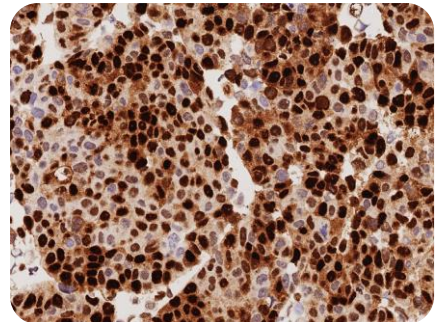
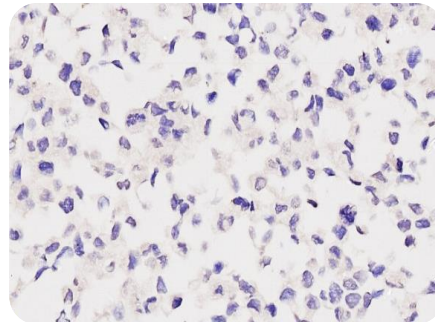
Roche (1E2)

**CONFIRM anti-Estrogen Receptor (ER) (SP1)** Rabbit Monoclonal Primary Antibody. Standard protocol (Product Code: 790-4324)



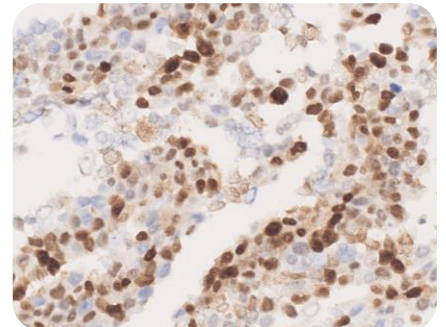
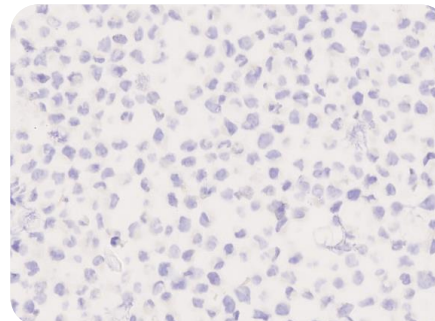
Leica (16)

**Progesterone Receptor (16)** Mouse Monoclonal Primary Antibody. Standard protocol. (Product Code: PA0312)



Agilent (PR1294)

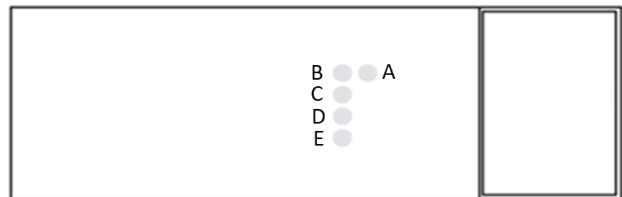
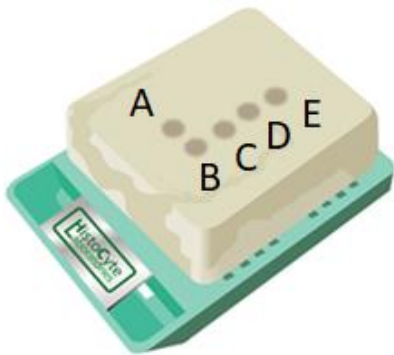
**Progesterone Receptor (PR1294)** Mouse Monoclonal Primary Antibody. Standard protocol (GA090)



# Breast Analyte Control<sup>DR</sup>

**Breast Analyte Control<sup>DR</sup>** is part of the *Dynamic Range* of HistoCyte Products. When a Dynamic Range or a control of high sensitivity is required the **Breast Analyte Control<sup>DR</sup>** is ideal. This product contains four cells of varying expression for a variety of breast biomarkers, including HER2, Estrogen Receptor and Progesterone Receptor. It also includes an osteosarcoma negative control.

**Breast Analyte Control<sup>DR</sup>** is available as pre-cut slides (2 slide and 5 slide mailers) and cell microarray blocks.



Cell line	IHC HER2	IHC ER	IHC PR
A: Osteosarcoma	0	Negative	Negative
B: Breast Adenocarcinoma	0	Homogeneous positive	Heterogeneously positive
C: Breast Ductal Carcinoma	1+	Heterogeneously positive	Homogeneous positive
D: Breast Ductal Carcinoma	1+/2+	Heterogeneously positive	Heterogeneously positive
E: Breast Ductal Carcinoma	3+	Heterogeneously positive	Heterogeneously positive



# Breast Analyte Control<sup>DR</sup> HER2

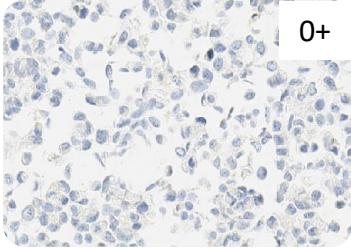
**PATHWAY™ anti-HER-2/neu (4B5) Rabbit Monoclonal Primary Antibody.** Standard protocol as per IFU.

**Bond Oracle HER2 IHC System (CB11).** Standard protocol as per IFU )Product Code:TA9145)

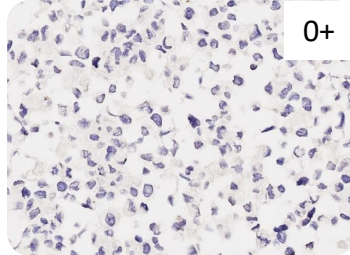
**HercepTest™ mAb pharmDx (clone DG44) (Dako Omnis) .** Standard protocol as per IFU Product Code: GE001)

**A**

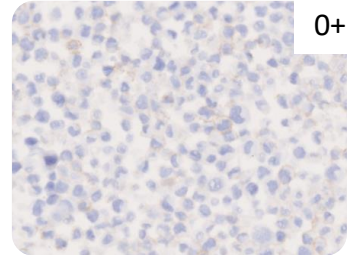
Osteosarcoma



0+



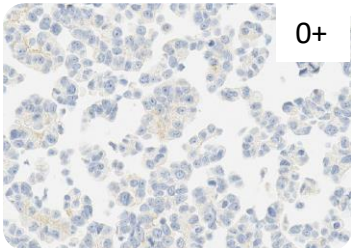
0+



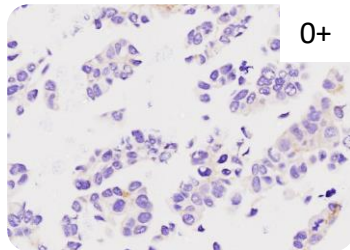
0+

**B**

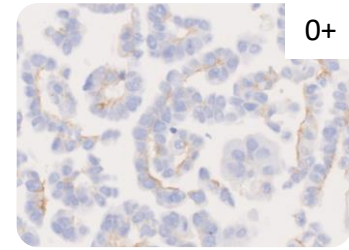
Breast Adenocarcinoma



0+



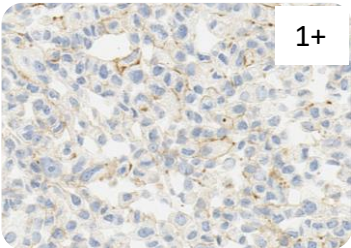
0+



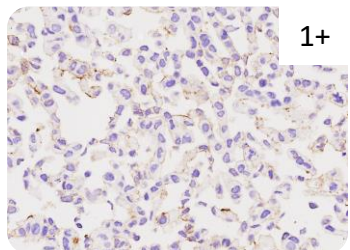
0+

**C**

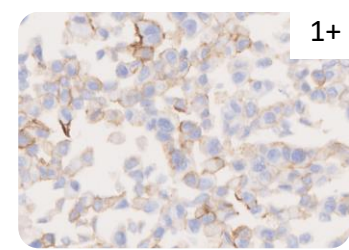
Breast Ductal Carcinoma



1+



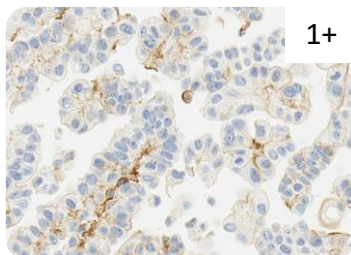
1+



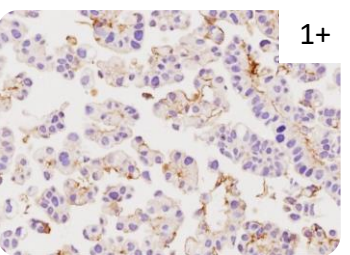
1+

**D**

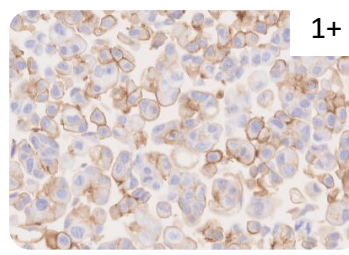
Breast Ductal Carcinoma



1+



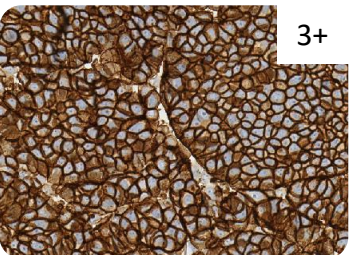
1+



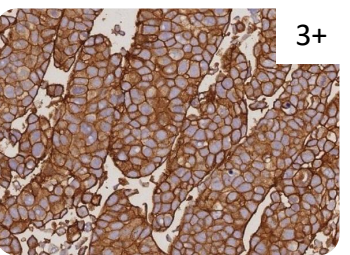
1+

**E**

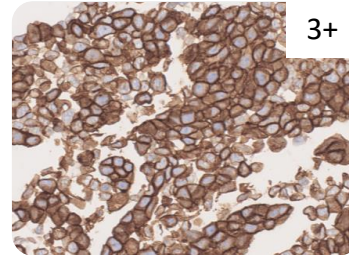
Breast Ductal Carcinoma



3+



3+



3+

**Roche (4B5)**

**Leica (CB11)**

**Agilent (DG44)**



# Breast Analyte Control<sup>DR</sup> ER

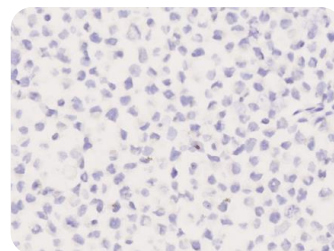
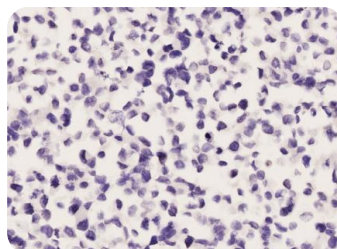
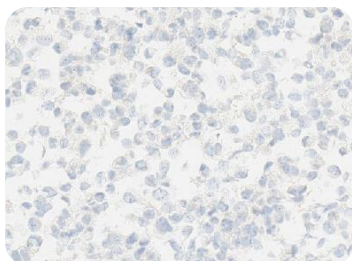
**CONFIRM anti-Estrogen Receptor (ER) (SP1) Rabbit Monoclonal Primary Antibody. Standard protocol (Product Code: 790-4324)**

**Estrogen Receptor (6F11) Mouse Monoclonal Primary Antibody. Standard protocol. (Product Code: PA0009)**

**Estrogen Receptor (EP1) Rabbit Monoclonal Primary Antibody. Standard protocol (GA084)**

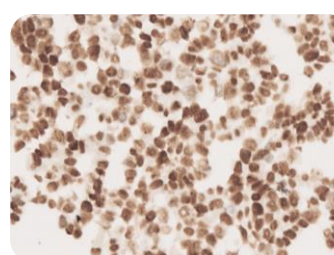
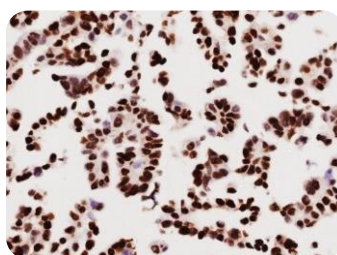
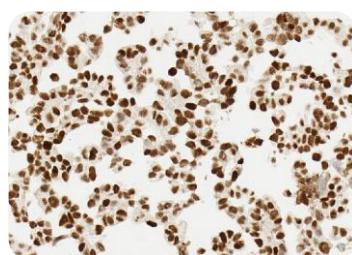
**A**

Osteosarcoma



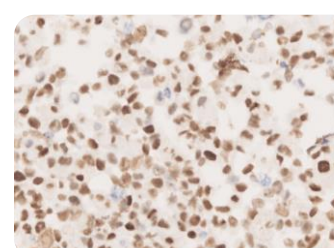
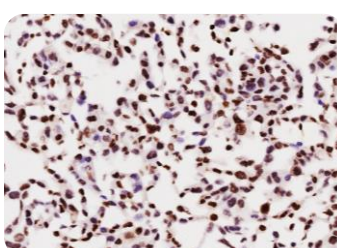
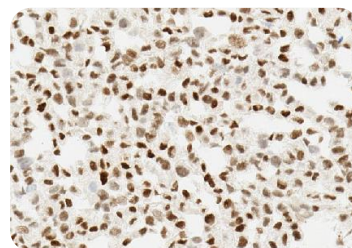
**B**

Breast Adenocarcinoma



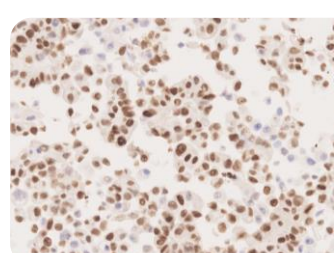
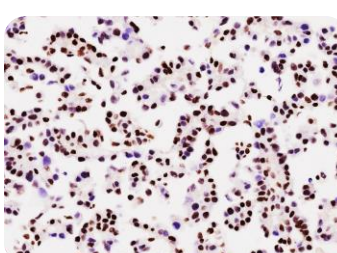
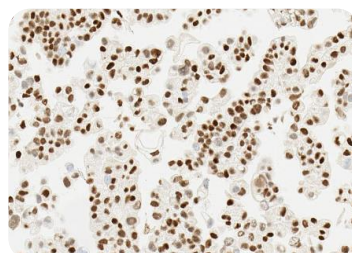
**C**

Breast Ductal Carcinoma



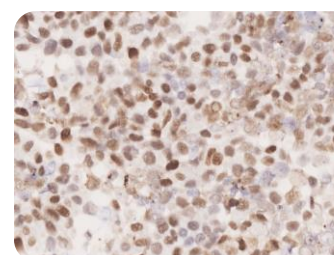
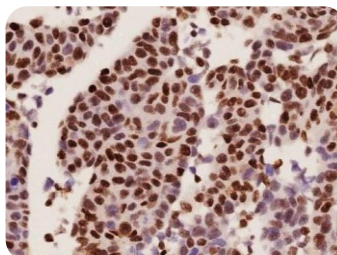
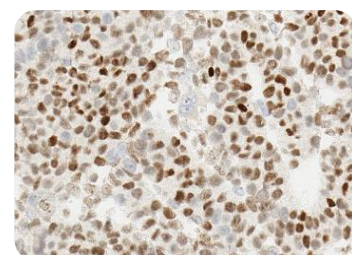
**D**

Breast Ductal Carcinoma



**E**

Breast Ductal Carcinoma



**Roche (SP1)**

**Leica (6F11)**

**Agilent (EP1)**



# Breast Analyte Control<sup>DR</sup> PR

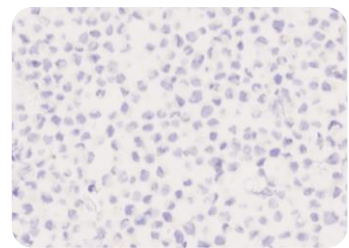
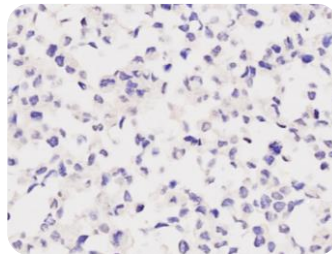
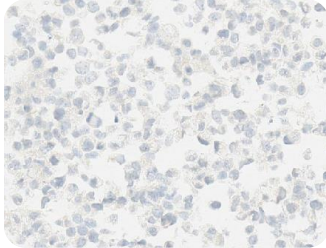
**CONFIRM anti-Estrogen Receptor (ER) (SP1)**  
Rabbit Monoclonal Primary Antibody.  
Standard protocol  
(Product Code: 790-4324)

**Progesterone Receptor (16) Mouse Monoclonal Primary Antibody.**  
Standard protocol.  
(Product Code: PA0312)

**Progesterone Receptor (PR1294)**  
Mouse Monoclonal Primary Antibody.  
Standard protocol  
(GA090)

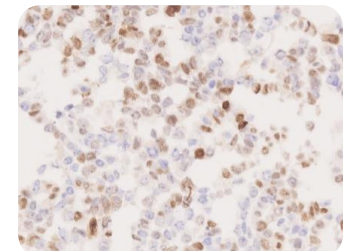
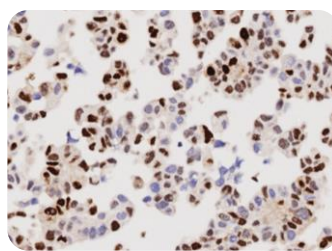
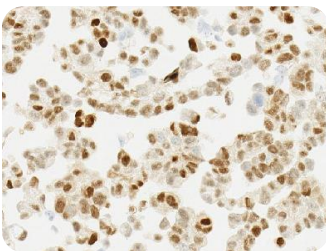
**A**

Osteosarcoma



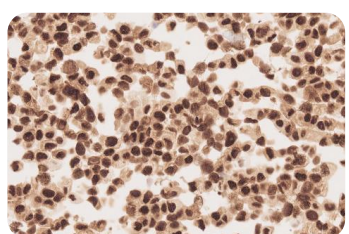
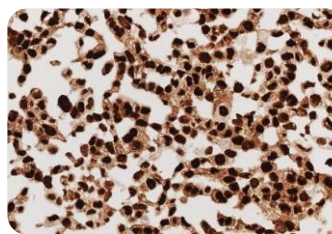
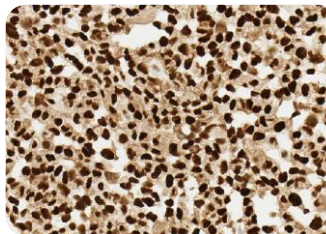
**B**

Breast Adenocarcinoma



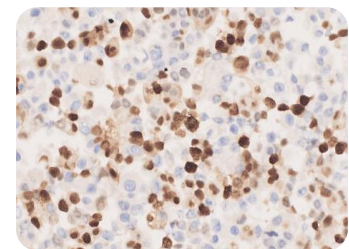
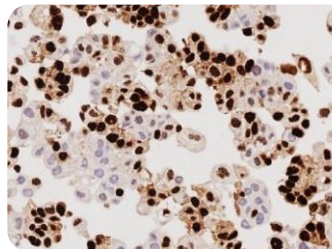
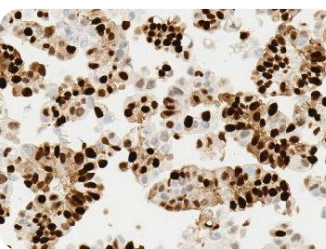
**C**

Breast Ductal Carcinoma



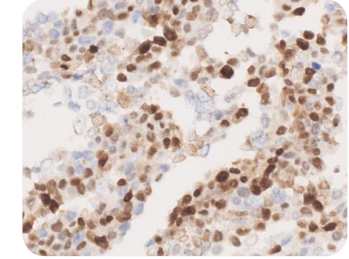
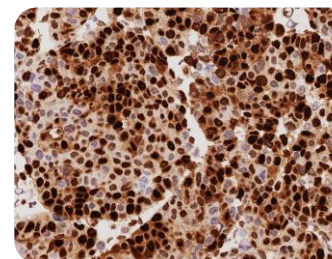
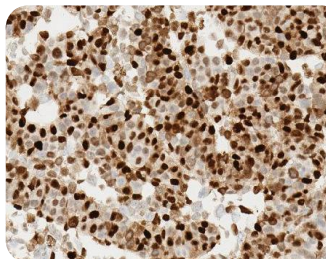
**D**

Breast Ductal Carcinoma



**E**

Breast Ductal Carcinoma



**Roche (1E2)**

**Leica (16)**

**Agilent (PR1294)**